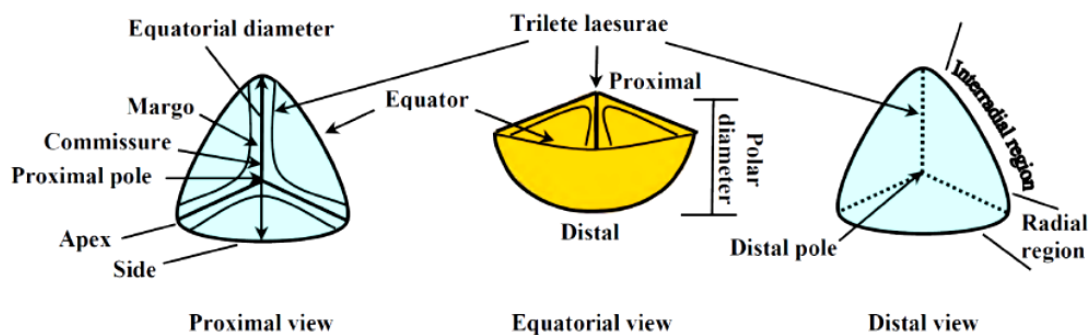


## 1- What do you know about Palynomorphs?

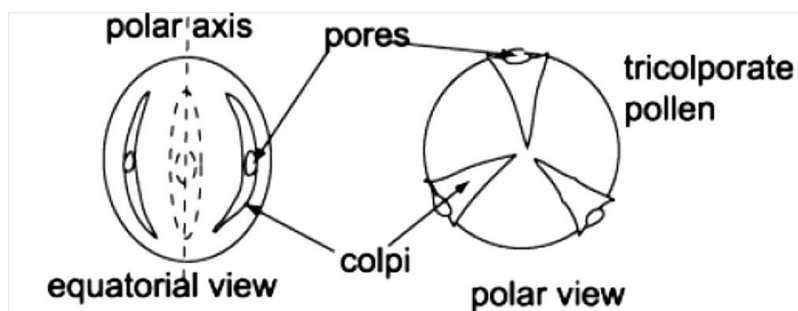
- Palynomorphs include microscopic plant and animal structures composed of sporopollenin, chitin, or related compounds that are highly resistant to most forms of decay other than oxidation.
- Palynomorphs are abundant in most sediments and sedimentary rocks, and are resistant to the routine pollen-extraction procedures including strong acids, bases, acetolysis, and density separation.
- Most palynomorphs are between 5–500  $\mu\text{m}$  in size.

## 2- With drawing and labels, illustrate the major features of:

### - A trilete spore



### - A tricolporate pollen



- A Chitinzoan

